



## 12A Mottram Moor

Mottram, Hyde, SK14 6LD

**£2,500 Per Month**

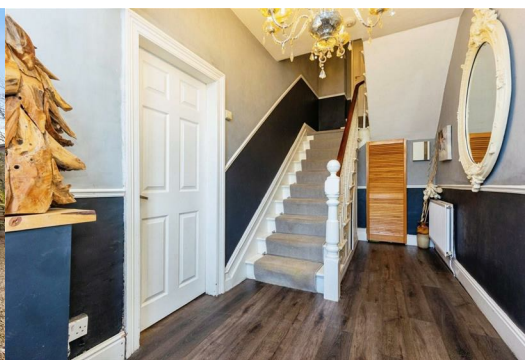


\*\*\*OUTSTANDING OPPORTUNITY\*\*\* Cousins Estate Agents are pleased to offer for rental this stunning five-bedroom semi-detached equestrian property.

Built in 1892, this impressive stone-built home beautifully combines character and charm with modern living.

The ground floor comprises a family room with a log burner, a separate bay-fronted living room featuring a marble hearth fireplace, and a spacious fully fitted kitchen/living area with bi-fold doors opening onto stunning views of the garden. Additional features include a wet room, utility room, saddle room, and a ground-floor bedroom, offering flexibility for family living.

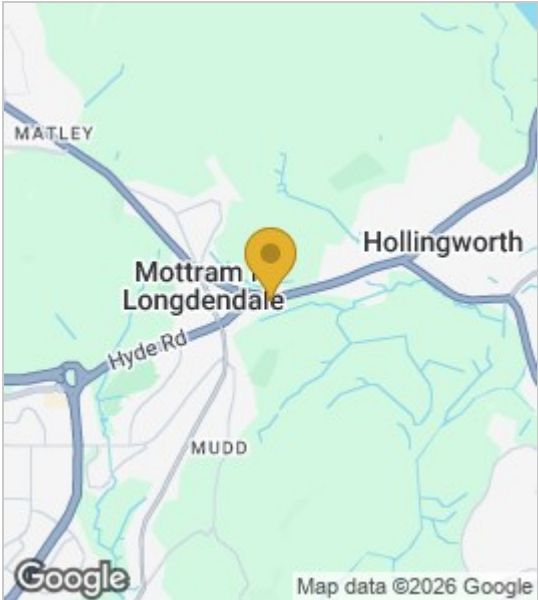
To the first floor, there are four generous bedrooms, including a master bedroom with en-suite, and a modern family bathroom.





- Entrance hallway
- Lounge
- Reception room
- Kitchen/Dining
- Saddle room
- Utility room
- Downstairs W/C

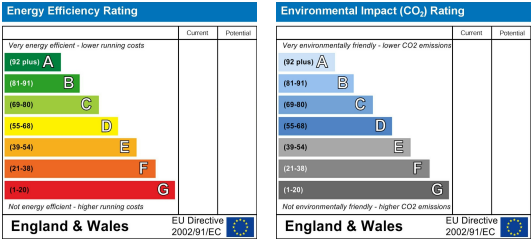
Area Map



Floor Plans



Energy Efficiency Graph



These particulars, whilst believed to be accurate are set out as a general outline only for guidance and do not constitute any part of an offer or contract. Intending purchasers should not rely on them as statements of representation of fact, but must satisfy themselves by inspection or otherwise as to their accuracy. No person in this firms employment has the authority to make or give any representation or warranty in respect of the property.

